



1920s

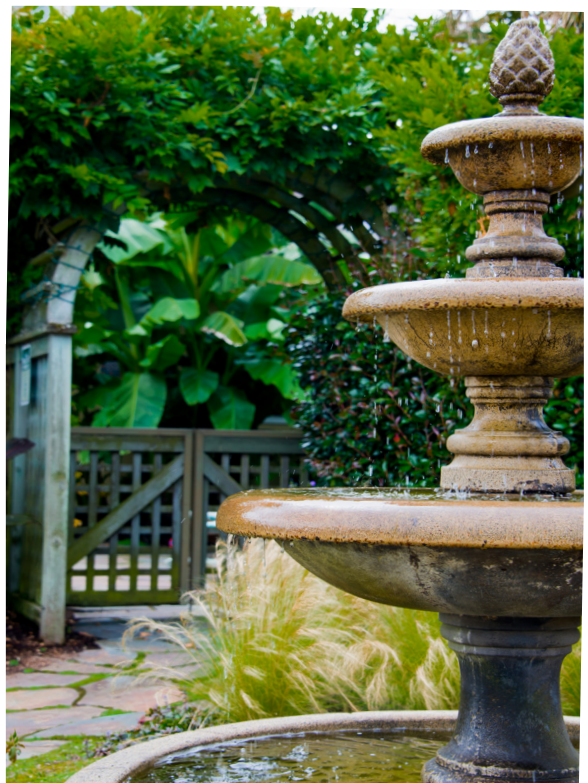
EVENT EXPERIENCE

This event is all about decadence and over-indulgence. Swanky drinks, delectable food, and dancing with the big band playing in the background will have your guests partying the night away. Crystals, chandeliers, and feathers adorn the room to tie the experience together with the luxurious atmosphere. Everything will scream opulence at this evocative event.

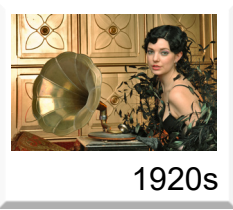
COLORS & TEXTURES

This event calls for gold, black, white and a rich blue for colors.

Step into the 1920s with this event that features all the lavish drinks, dancing, and glamour of the Gatsby mansion and legendary parties. Bring your client and their guest back to a time of economic prosperity, automotive mobility and extravagance.



SETTING THE MOOD



INVITATIONS

- Gold embossed print in an art nouveau font on a sexy to the touch black paper
- Gold on black like the gates of the Gatsby Mansion
- Very elegant and very high end will set the mood for the entire party

These invitation ideas could be created by your preferred local advertising or marketing company. If you really have it in you, you could also make them yourself.

ENTRYWAY

Use pillars, perhaps with lions on top, to suggest guests are entering a long driveway to a mansion resembling Gatsby's. Wrap the pillars with ivy and surround them with tall hedges. Add a free standing mailbox for an enhanced

look. A 1920s style car sitting out front of the entry will be the cherry on top.

PRE-FUNCTION AREA

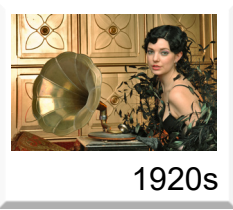
Have a pianist, accompanied by a lounge singer, playing a grand piano while guests sip summer cocktails. The area should be a relaxed space for guests to catch their breath before entering the party. Place 1920s inspired furniture groupings strategically around the room. White palm trees could flank the piano and a crystal chandelier would hang above it. Have waiters in coattails passing champagne or models in champagne skirts.

MAIN ROOM

Hang frosted globe lights around the bar or the perimeter of the primary social area. Set tables with umbrellas that have hanging tea lights



DETAILS AND ACCENTS



underneath. If you prefer to keep the area open, hang paper umbrellas around the outside of the room that are lit within. Twinkle lights in the ceiling will leave guests feeling as if they are outside under the stars.

Use shrubbery, potted plants, and fountains to help create an outdoor garden.

STAGE AREA

Set your stage to look like the 1920s style mansion and use a mansion backdrop so guests feel as if they are in the back yard of the Gatsby mansion. Use a clear acrylic podium and if you have the opportunity, brand the front of the podium with your party logo.

DÉCOR

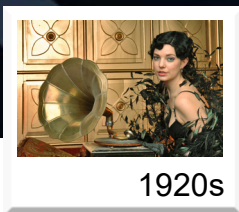
In the center of the ceiling, hang fabric swags, clear plastic bubbles, and mirror balls to create the excessive look of the party. Use posh furniture and 1920s style clear balloons throughout the room. A girl in a white dress lounging in a claw-footed tub filled with plastic bubbles or a girl in a champagne glass will add exuberance to set this party apart from any others. Gold ornate gates at the entries of the room will get the party started on the right foot.

FURNITURE ACCENTS

For furniture elements, look for white couches and fainting lounges. Create small, intimate seating areas around the room for guests to sit and relax.



ACCENTS AND DETAILS



1920s

CENTERPIECES

There are a several elegant centerpiece ideas that can be used for this event. Use white feathers freely in your design:

- Crystal candelabras with feather toppers
- Crystal groupings of vases with battery operated candles
- Tall vases with wisteria in white
- Chandeliers on crystal bases

DINNER SET UP

Set the tables with golden or black linens, gold or black chargers (opposite color of the linens), crystal goblets, and beautiful linen napkins. Add a small chocolate for each place setting for nice sweet bite after dinner.

Some food suggestions:

- Soup shooters or oyster shooters
- Pastry pigs (pigs in a blanket)
- Ham and turkey finger sandwiches
- Fried chicken

- Glitter ball cake pops with gold and black tips
- Decadent, over-the-top desserts including colorful macaroons

BAR AND CUSTOM DRINK

Use this opportunity to create an amazing ice bar with the logo of the company or event in it. Consider an ice lounge with ice bar girls to serve their drinks. Consider adding a few special servers to help with the drinks.

ENTERTAINMENT

Cigarette girls, feather dancers, and a couple of dancers to dance The Fox Trot will get the dancing started and help move the party along. A cigarette stand would add to the ambiance and incorporate well with the cigarette girls.





1920s

A jazz band is quintessential of this era and would be great for this theme. Hire flapper dancers or swing dancers and a swing band. A Rat Pack Band would work great for this event as well.

CHARACTERS

The following characters can be incorporated into the theme with costuming:

- Jazz musicians
- Flappers
- Bootleggers
- 20s attired party goers
- Cigarette girls walking around offering a bubble gum cigarette or

other small gift

- Champagne skirt models

PHOTO OPS

- Have two large empty frames set up in an area designated for photos.
- Have photographers standing by to take guests photos with a performer
- A printed backdrop of Gatsby's mansion or the billboard of bespectacled eyes
- Have a grand piano with a flapper girl on top for guests to pose with
- Deliver photos on site as guests are leaving for the night





1920s

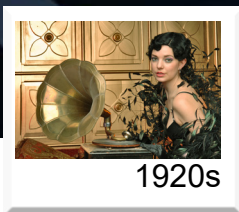


supply list

How to determine which elements in each theme packages is right for you and your client:

- \$-\$\$\$\$ Some of the theme elements require a very small investment while others require a higher spend. You can guide your client and help them determine how to use their budget to achieve their desired result.
- Star ratings: Determine the impact your client wants to make. A one-star element in a theme package works well for simple and professional events, whereas a five-star element will leave your client and their guests in complete awe! There are many options in between, so you'll always have a way to meet your client's needs and goals.

Supplies	Source/Notes Vendor Suggestions	Price Range	Value
Invitations:			
Invitations	Create your own with items purchased at your local craft store or use a local print shop or advertising agency	\$\$-\$\$\$\$	****
Entryway:			
Pillars or Pillars with Lions on Top	Bellacor www.bellacor.com/productdetail/deep-gold-richeleu-lion-left-189725.htm	\$\$	**
Tall Hedges	Try your local décor provider or use the link provided www.commercialsilk.com/	\$\$\$	**
Mailbox	Home Depot www.homedepot.com/p/Gibraltar-Mailboxes-Arlington-Premium-White-Steel-Post-Mount-Mailbox-AR15W000/100025697?cm_	\$\$\$	****

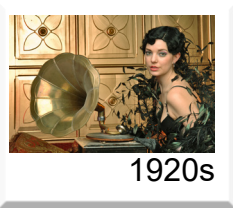


1920s

SUPPLY LIST

Supplies	Source/Notes Vendor Suggestions	Price Range	Value
Entryway (continued):			
1920's style car	Try your local auto club for display cars. If not, you can have your sign company print one out - life sized or 4 x 8 ft on one sheet of foamboard.	\$\$\$	****
Ivy	Save On Crafts http://www.save-on-crafts.com/search.html?keywords=ivy+garland	\$	****
Prefunction Area:			
1920's furniture grouping	Look for local vintage stores or local event decor companies that can help you with furniture rentals	\$\$-\$\$\$	****
White Palm Trees	The Canvas Nursery http://www.thecanvasnursery.com/products.php?category=1	\$\$\$	***
Crystal Chandelier	Shop Wild Things www.shopwildthings.com/extra-large-event-chandeliers.html	\$\$	****
Models in Champagne Skirts	Champaign Dolls www.mrsbellaschampagnedolls.com/#!glass-gallery/c247v	\$\$\$\$	*****
Main Room:			
Hanging Frosted Globe Lights	These can be found at the local Hardware store or at the link provided www.paperlanternstore.com/green-globe-string-light-frosted-bulbs.html	\$	***
Fancy Umbrellas	Shop Wild Things www.shopwildthings.com/hafapa.html	\$	****
Backdrop	Backdrops Fantastic http://www.backdropsfantastic.com/backdrop_themes/backdrops/Backdrop_AD005-Great-Gatsby-Motif.html	\$\$\$	*****

SUPPLY LIST



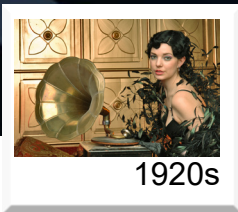
1920s

Supplies	Source/Notes Vendor Suggestions	Price Range	Value
Main Room (continued):			
Lighting for Umbrellas	Lights for All Occasions http://bit.ly/1Kro45S	\$	*
Fabric Swags	Call your local décor company to make this happen for you.	\$\$\$	****
Paper Lanterns	Paper Lantern Store www.paperlanternstore.com/paper-lanterns.html?gclid=CjwKEAiAjsunBRCy3LSlz_PJqCgSJACJY7yKljYBLzH4vTTfNsY4VKP25-NKnGL00D4JysGSYGsteRoC9kfw_wcB	\$\$\$	*****
Twinkle lights in the ceiling	Use your local décor company	\$\$\$	****
Shrubbery	Commercial Silk www.commercialsilk.com/	\$\$\$	***
Fountains	Design Tuscano http://www.designtoscano.com/category/garden+statues/classic+garden+statues.do?nType=1	\$\$\$	***
Outdoor Garden	Improvements http://www.improvementscatalog.com/planters-outdoor-plants/topiaries/?redirect=y#w=&af=cat3:outdoorliving_topiarieshangingbasketsplanters_topiaries_cat2:outdoorliving_topiarieshangingbasketsplanters_cat1:outdoorliving_pagetype:products	\$\$\$\$	*****

SUPPLY LIST

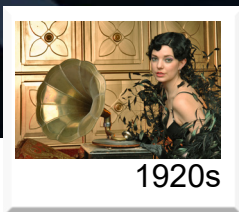


Supplies	Source/Notes Vendor Suggestions	Price Range	Value
Décor:			
Fabric Swags	Your local décor company	\$\$\$	*****
Clear plastic bubbles	Save On Crafts http://www.save-on-crafts.com/search.html?keywords=bubble+sphere+small	\$	*
Mirror Balls	Save On Crafts www.save-on-crafts.com/mirrors1.html	\$\$	****
Clear Balloons	Check your local card store or florist for balloons and helium (402) 339-2092 Midwest Balloons	\$	****
Claw footed tub	Look to local second hand or hardware restorations company	\$\$\$	****
Large Champagne Glass (For someone to sit in)	Hire a local gal from a modeling agency/ get the glass from the Theme Trader - look at the champagne fountain as an option as well	\$\$\$	****
Gold Ornate Gates	These can be cut out of foam board or foamcore and spray painted or you can find them	\$\$	***
Furniture Accents:			
1920s Furniture	Check your local vintage furniture store	\$\$\$	*****



SUPPLY LIST

Supplies	Source/Notes Vendor Suggestions	Price Range	Value
Centerpieces:			
Crystal Candelabras with Feathers	Check your local home furnishing store or the link provided www.save-on-crafts.com/search.html?keywords=ostrich+feathers	\$\$\$	****
Crystal Centerpieces Grouping with Battery Operated Candles	Event Decor Direct http://www.eventdecordirect.com/catalog/advanced_search_result.php?keywords=chrome%20candle%20holders&search_in_description=1&sort=2a&page=1	\$\$	****
Tall Vases with White Wisteria	Save On Crafts www.save-on-crafts.com/tallvases19.html	\$\$	****
Chandeliers on Crystal Bases	Save On Crafts www.save-on-crafts.com/ta1.html	\$\$	****
Dinner Set-Up:			
Golden Linens	Beyond Elegance www.beyondelegance.com	\$\$	***
Black Satin Linens	Beyond Elegance beyondelegance.com/	\$\$	***
Chargers Black or Gold	Smarty Had a Party www.smartyhadaparty.com	\$	**
Small Elegant Chocolates	Bon Bons - BeDazzle My Bon Bons www.bedazzlemybonbons.com/	\$	***
Napkins	Get the napkins from your linen provider or your catering company	\$	**
Napkin Rings	Save On Crafts www.save-on-crafts.com/diamondrings1.html	\$	**



1920s

SUPPLY LIST

Supplies	Source/Notes Vendor Suggestions	Price Range	Value
Bar and Custom Drinks:			
Ice Bar and Ice Lounge	Nadeau Ice www.nadeauice.com/	\$\$-\$\$\$	***
Entertainment:			
Cigarette Girls	Hire local talent from the high school, college or talent agency		
Feather Dancers	Local dance troupe	donation	**
Dance starters	Local dance troupe	donation	**
Jazz Band	Associated www.associated.net/	\$\$\$	****
Flappers	Associated www.associated.net/	\$\$\$	****
20's attired Party Goers	Local dance troupe	donation	**
Bootleggers	Local talent	donation	**
Champagne Skirt Models	Check with your decorator	\$\$\$	****
Photo Ops:			
Picture Handouts	Make sure you put your logo on the outside of the photo folder http://www.sendaframe.com/s30/keywords:paper%20folders	\$	****
Grand Piano	Find a rental source or ask the facility if they have one on site	\$\$\$	*****
Picture Backdrops	Backdrops Beautiful www.backdropsbeautiful.com/usa-backdrops/homestead-mansion-1.html	\$\$\$	****